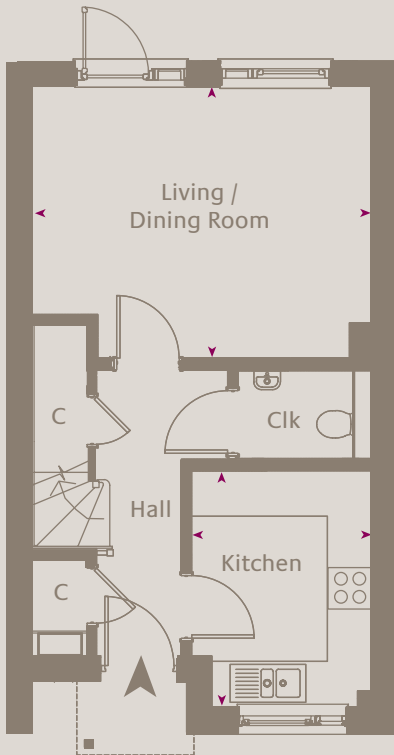


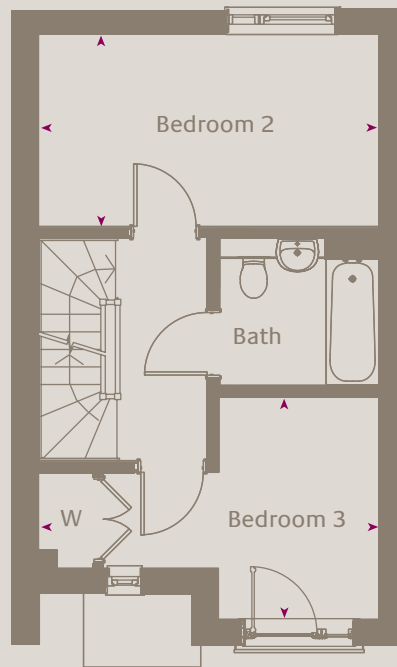
# THE MEWS

## AT OLD HARLOW

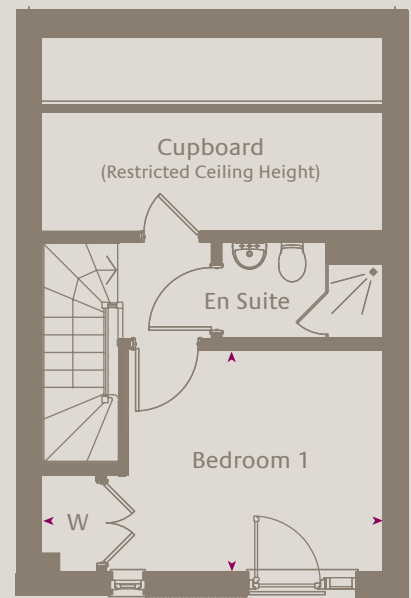
Revised layout



GROUND FLOOR



FIRST FLOOR



SECOND FLOOR

### Plots 38, 39 & 40

THREE BEDROOMS  
88.5 sq m 953 sq.ft.

Living / Dining Room  
4.51m x 3.60m 14' 10" x 11' 10"

Kitchen  
3.12m x 2.40m 10' 3" x 7' 10"

Bedroom 1  
4.56m x 2.99m 15' 0" x 9' 10"

Bedroom 2  
4.56m x 2.56m 15' 0" x 8' 5"

Bedroom 3  
4.56m x 2.99m 15' 0" x 9' 10"



For further information please call:

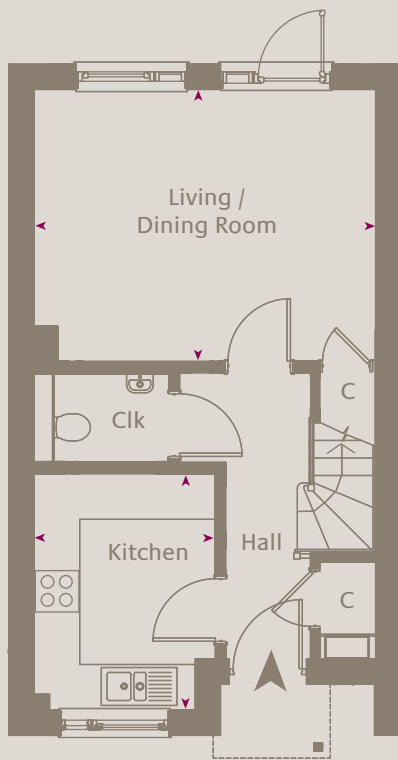
**0844 800 9448**  
[www.modeharlow.co.uk](http://www.modeharlow.co.uk)

The details in this brochure are intended as a guide only and must not be relied on as a statement of fact. They do not form the basis of any contract. The descriptions, specifications, distances and all other information are believed to be correct but their accuracy is in no way guaranteed. Designed and produced by Four Corners Advertising May 2012. Tel: 020 3358 0040.

# THE MEWS

## AT OLD HARLOW

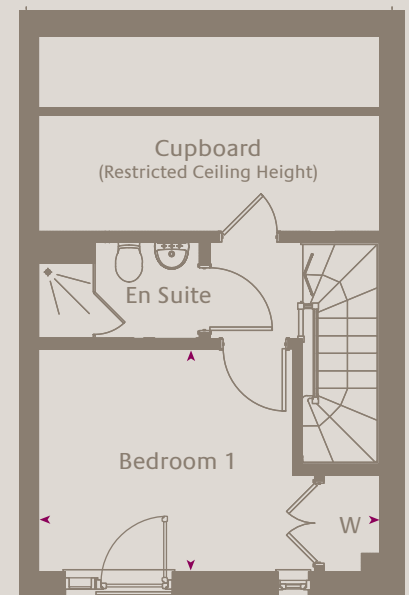
Revised layout



GROUND FLOOR



FIRST FLOOR



SECOND FLOOR

## Plots 8, 9, 10, 11, 12, 13<sup>†</sup>, 18\*, 22 & 23

### THREE BEDROOMS

PLOTS 8, 9, 10, 11, 12, 18, 22 & 23 - 88.5 sq m 953 sq.ft.

PLOT 13 - 90.2 sq m 971 sq.ft.

#### Living / Dining Room

4.51m x 3.60m 14' 10" x 11' 10"

#### Kitchen

3.12m x 2.40m 10' 3" x 7' 10"

#### Bedroom 1

4.56m x 2.99m 15' 0" x 9' 10"

#### Bedroom 2

4.56m x 2.56m 15' 0" x 8' 5"

#### Bedroom 3

4.56m x 2.99m 15' 0" x 9' 10"



For further information please call:

# 0844 800 9448

[www.modeharlow.co.uk](http://www.modeharlow.co.uk)

The details in this brochure are intended as a guide only and must not be relied on as a statement of fact. They do not form the basis of any contract. The descriptions, specifications, distances and all other information are believed to be correct but their accuracy is in no way guaranteed. Designed and produced by Four Corners Advertising May 2012. Tel: 020 3358 0040.

\* Handed to the one drawn.

† Plot 13 is 88mm wider than the drawing shown above.